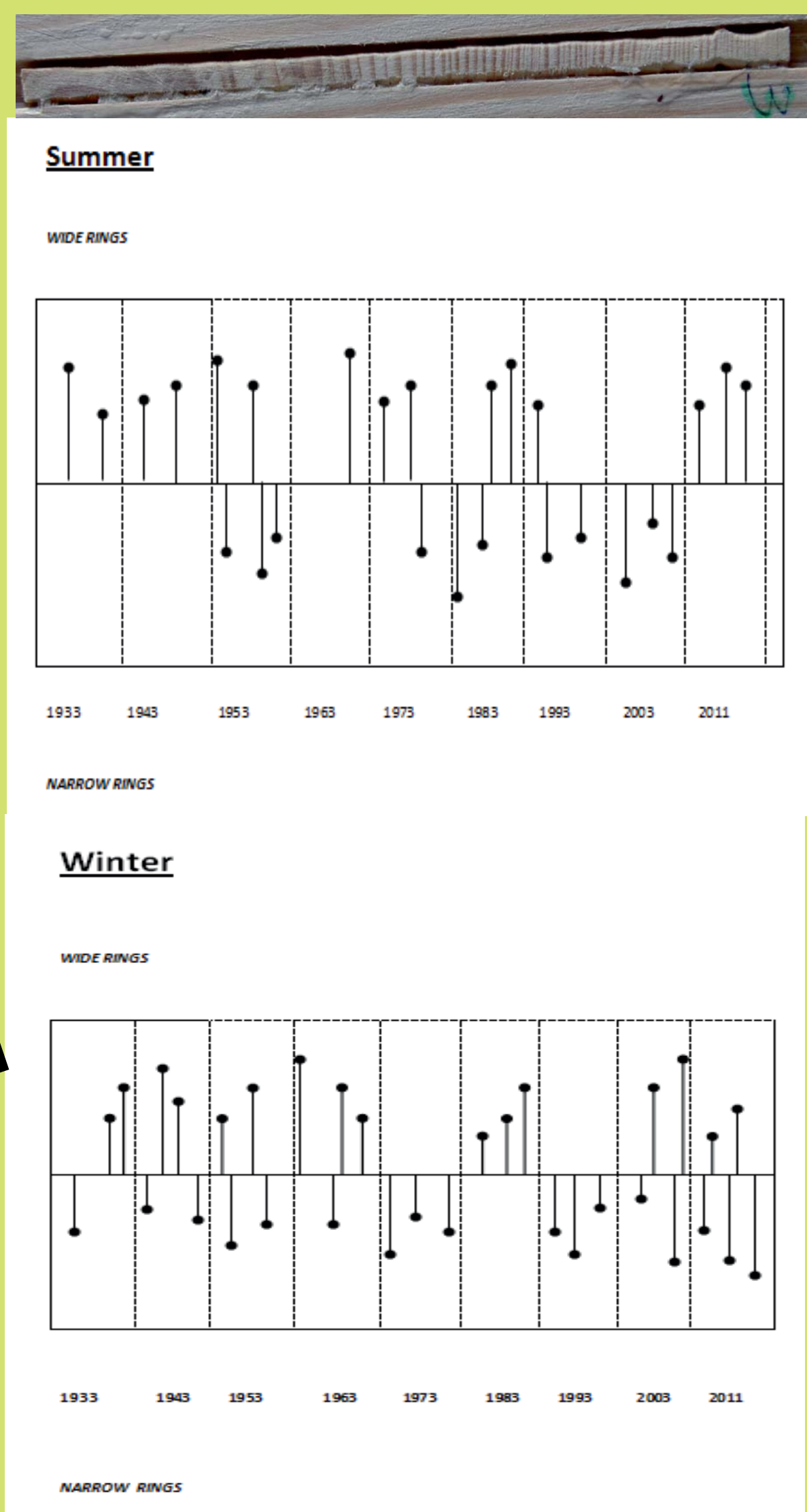
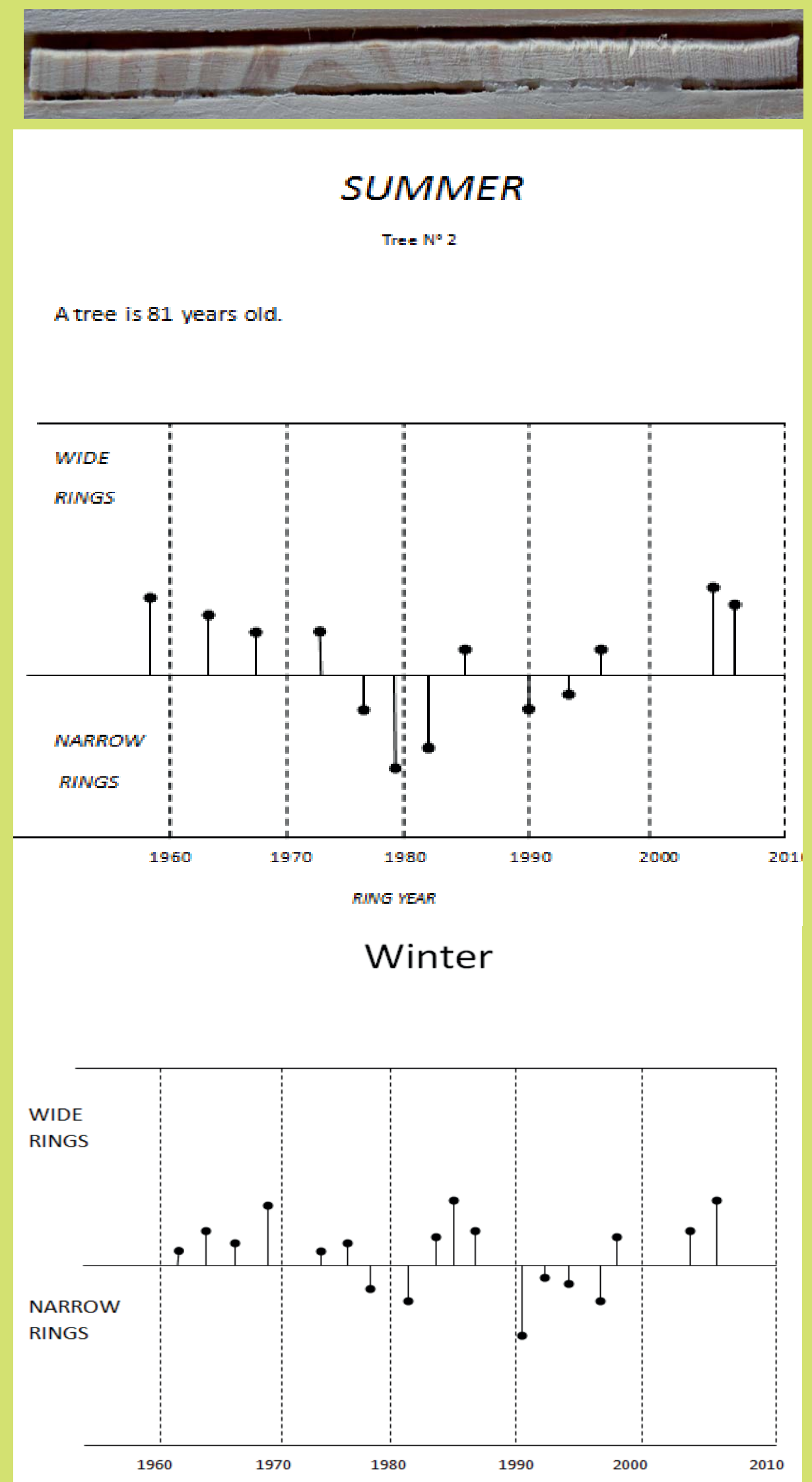
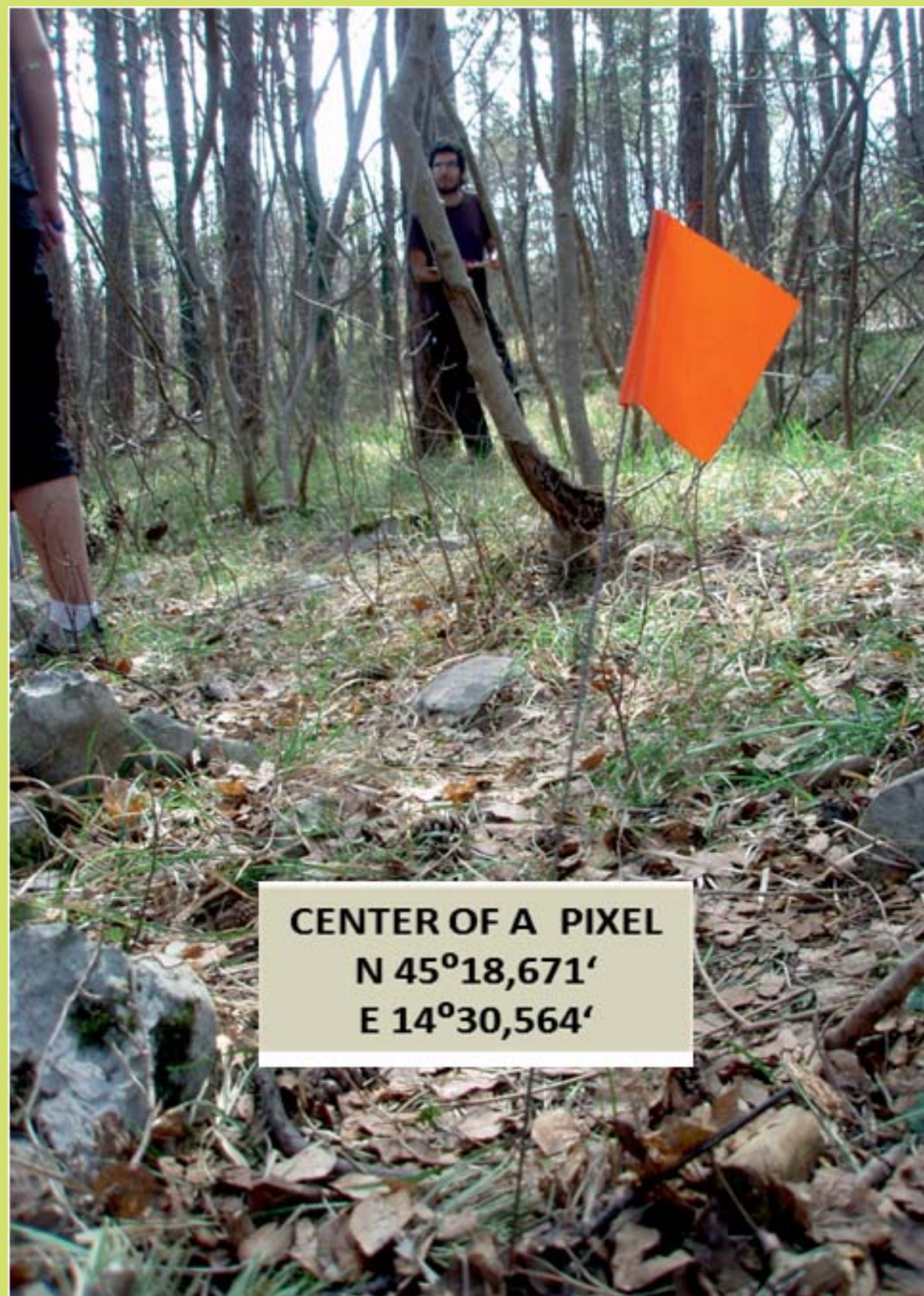
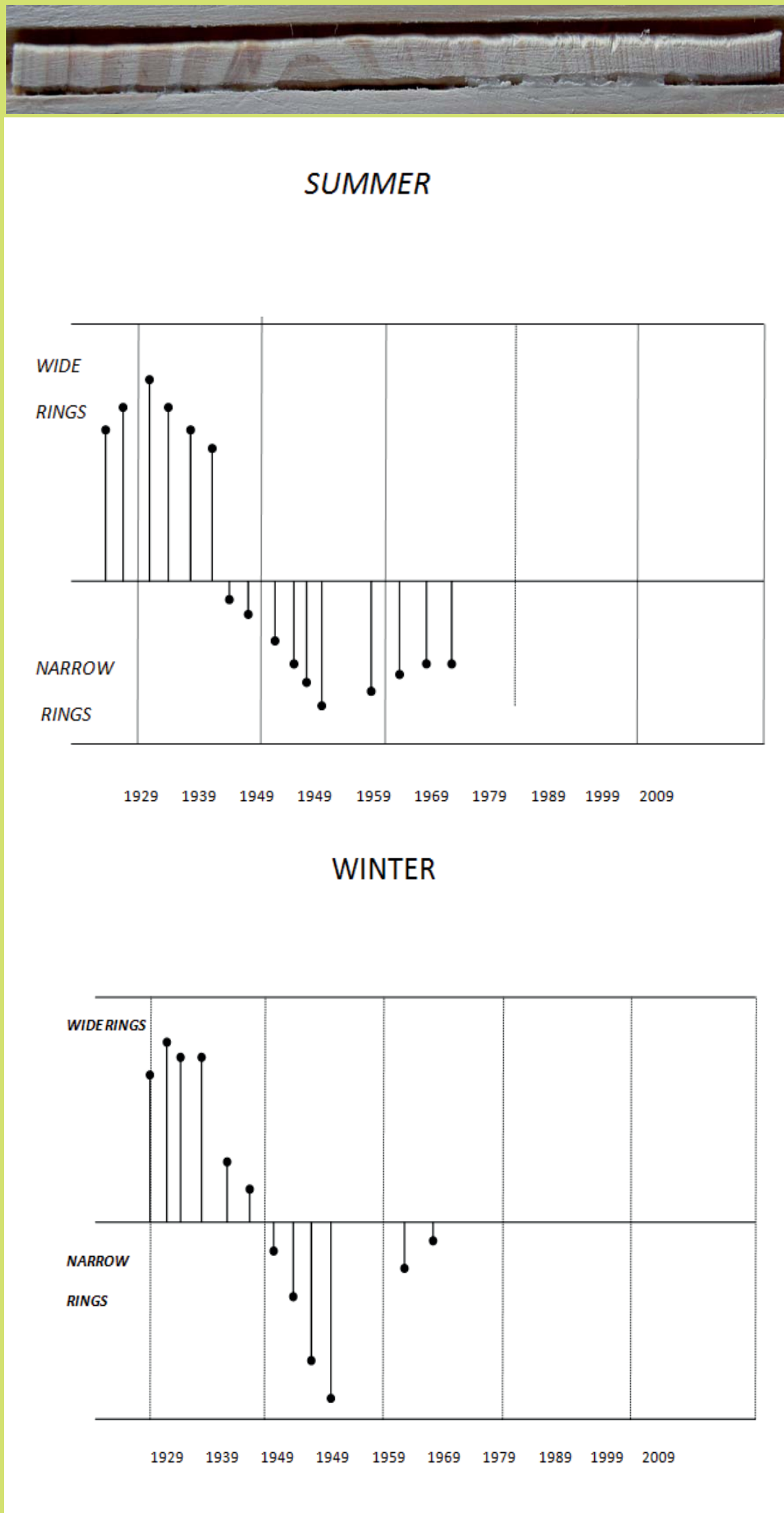
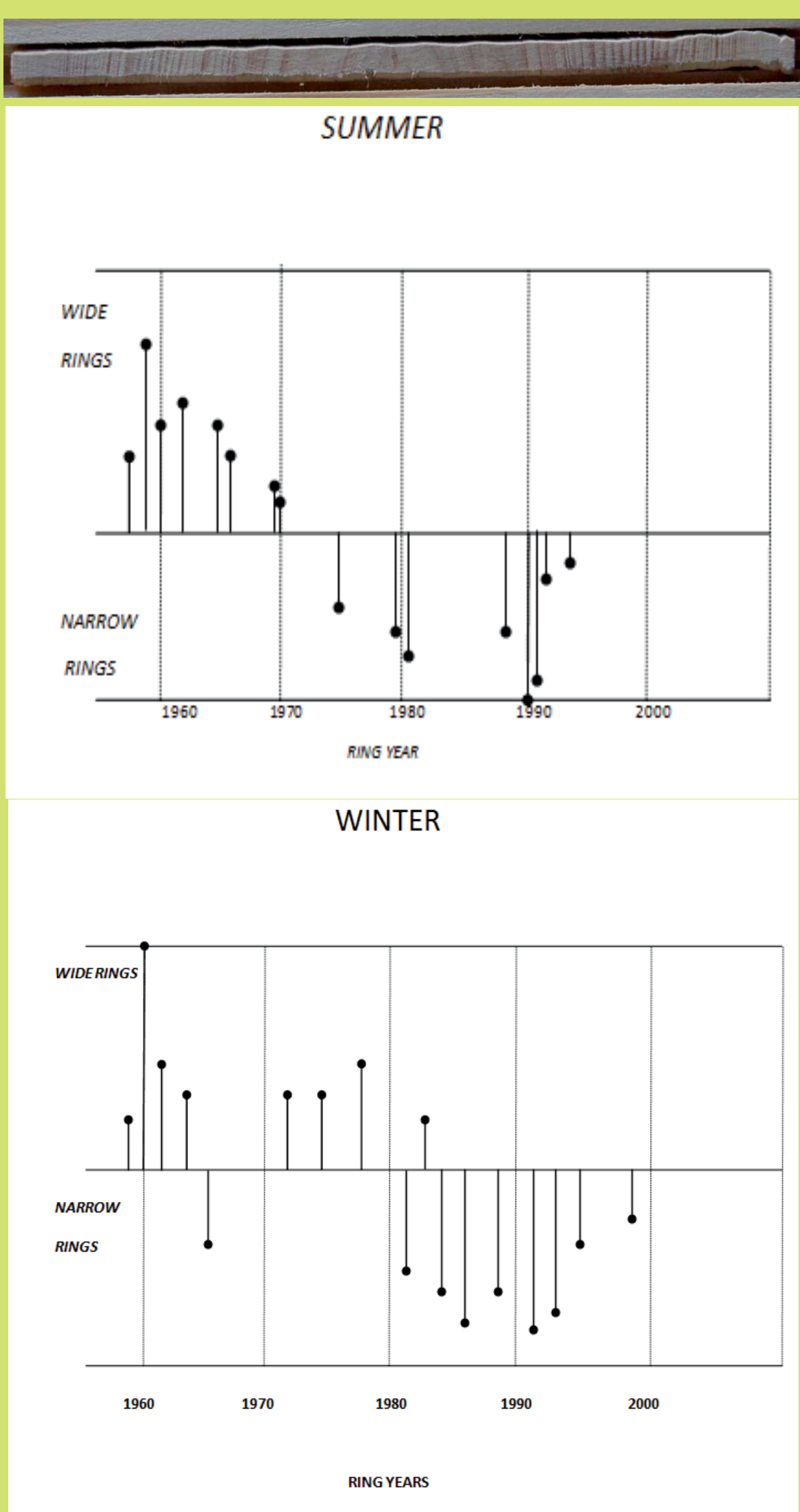


«THE TREE RING»



SPECIES	No.	GPS MEASUREMENTS	AV. HEIGHT/m
HOP HORNBEAM	1.	6,20
	2.	N45°18,675', E14°30,663'	6,87
	3.	N45°18,683', E14°30,666'	7,05
	4.	N45°18,674', E14°30,663'	6,32
	5.	N45°18,674', E14°30,663'	7,90
BLACK PINE	1.	N45°18,678', E14°30,664'	12,06
	2.	N45°18,674', E14°30,655'	12,31
	3.	N45°18,683', E14°30,656'	7,42
	4.	N45°18,674', E14°30,659'	11,27
	5.	N45°18,671', E14°30,661'	10,58



Summary of tree canopy observations	Total +	Total -	Total canopy observations		% Tree canopy	
	44	5	49		89,79	
Summary of ground observations	Total G	Total B	Total	Total ground observ.	% Ground	
	5	25	30	49	61,22	
Summary of canopy type	Total E	Total D	Total canopy type observations		% E	% D
	44	9	53		83,02	16,98
Summary of ground vegetation type	Total graminoid (GD)	Total shrub (SB)	Total ground type observations		% GD	% SB
	22	5	41		53,6	12,19

